

**SPT Safe Spider Crane,
Protecting Construction, Protecting People!**

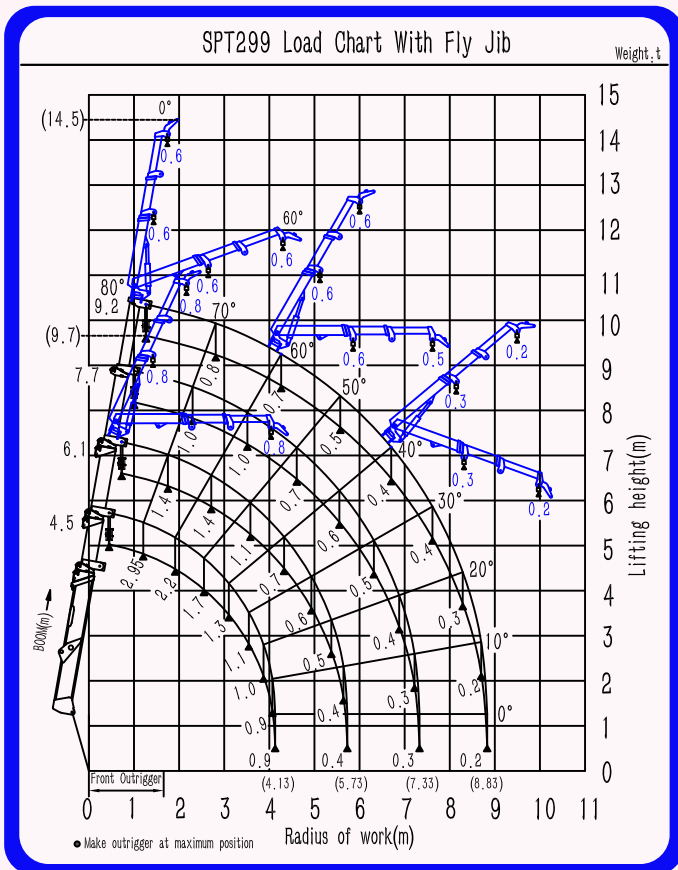


**HENAN SPT MACHINERY
EQUIPMENT CO., LTD.**

Global Leading Brand of Spider Crane

· Global Two-year Warranty ·

SPT299



Capacity: 2.95t × 1.4m

Ground lifting height:

9.7m × 0.8t / 14.5m × 0.6t (with fly jib)

Outrigger Maximum extension dimension (mm) :
4220 (Length) X 3700 (Front) X 4100 (Back)

Walking speed: 0-2.0km/h

Motor voltage: AC200V-240V (single phase)

Diesel engine:

Model: 3TNV74F (Yanmar)

Rated output: 11.2kW/2400 min⁻¹

Applied regulation/Altitude:

EPA-Tier4, EC stage V/1200m

Type of operation (crane, walk, outrigger) :

Wireless remote and manual

Dimension (Length × Width × Height) :

3500mm × 900mm × 1650mm

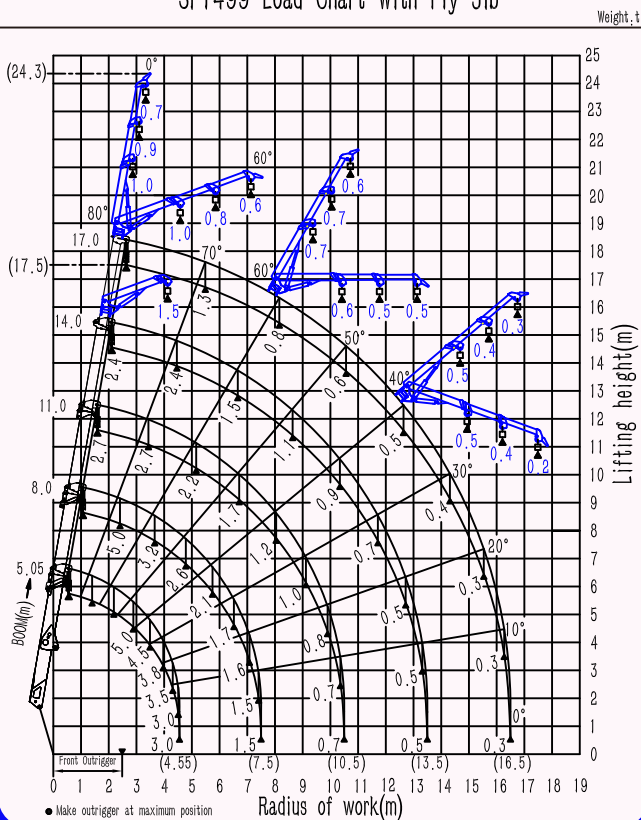
Weight (Crane + Hydraulic fly jib) :

2700kg + 200kg

SPT499



SPT499 Load Chart With Fly Jib



Capacity: 5.0t×3.0m

Ground lifting height :

17.5m×1.3t / 24.3m×0.7t (with fly jib)

Outrigger Maximum extension dimension (mm) :
5560 (Length) X5850 (Front) X5760 (Back)

Walking speed: 0-2.0km/h

Motor voltage: AC 380V (three phase)

Diesel engine:

Model: D1703 (Kubota)

Rated output: 18.2kW/2200 min⁻¹

Applied regulation/Altitude:

EPA-Tier4, EC stage V/1200m

Type of operation (crane, walk, outrigger) :

Wireless remote and manual

Dimension (Length×Width×Height) :

5480mm×1400mm×2000mm

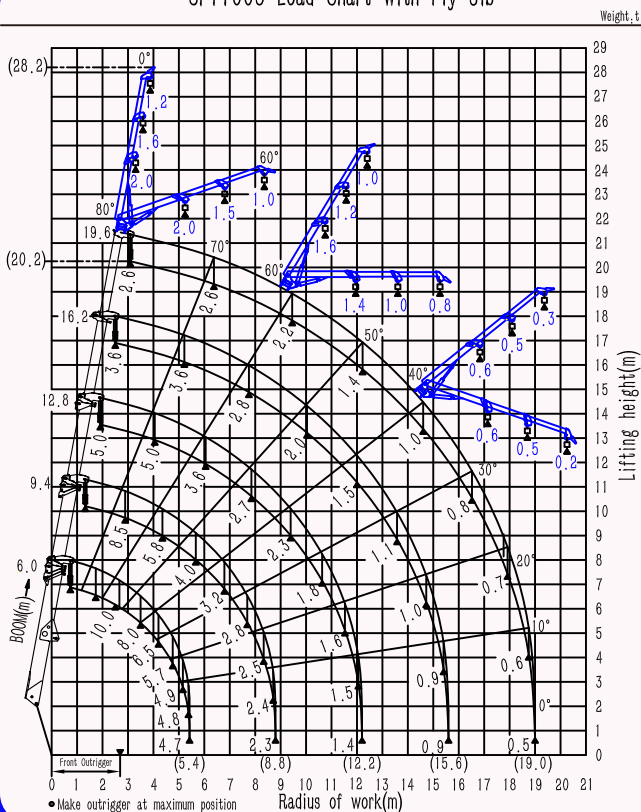
Weight (Crane + Hydraulic fly jib) :

6200kg+350kg

SPT1009



SPT1009 Load Chart With Fly Jib



Capacity: 10.0t×2.5m

Ground lifting height:

20.2mx3.0t / 28.2x1.2t (with fly jib)

Outrigger Maximum extension dimension (mm) :
6850 (Length) X7100 (Front) X6970 (Back)

Walking speed: 0-2.0km/h

Motor voltage: AC 380V (three phase)

Diesel engine:

Model: 4TNV88C (Yanmar)

Rated output: 29.1kW/2400 min⁻¹

Applied regulation/Altitude:

EPA-Tier4, EC stage V/1200m

Type of operation (crane, walk, outrigger) :

Wireless remote and Dual axis joystick

Dimension (Length×Width×Height) :

6380mm×1780mm×2480mm

Weight (Crane + Hydraulic fly jib) :

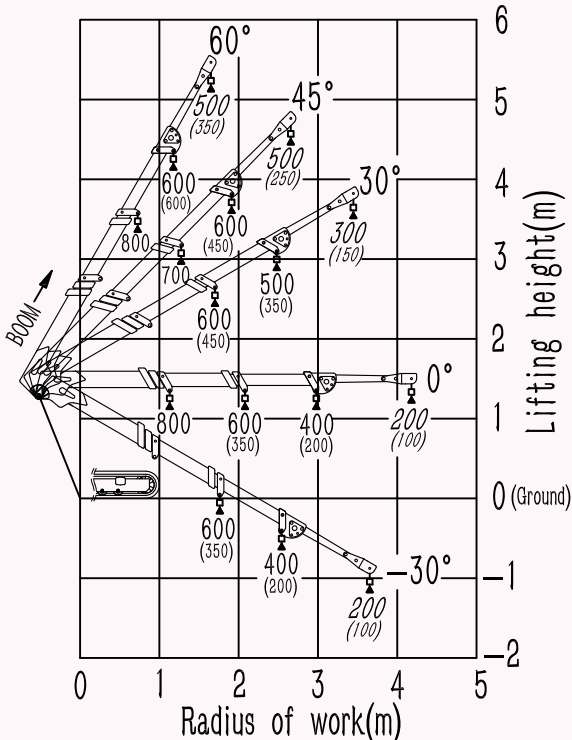
11800kg+420kg

SG80



SG80 Load Chart With Fly Jib

Weight: .kg



• Make sure the pavement is solid and flat

• Maximum position of counterweight • () - without counterweight

Capacity: 800kgX1.2m

Ground lifting height:

4.2mX600kg / 5.0mx500kg (Fly jib)

Walking speed: 0-1.2km/h

Motor voltage:

AC 200V-240V (single phase)

Gasoline engine:

Model: 25V3 (Briggs & Stratton)

Rated output: 10kW/3600 min⁻¹

Applied regulation/Altitude:

EU stage V/1200m

Type of operation (crane, walk) :

Wireless remote and manual

Dimension (Length×Width×Height (Min)) :

1880 (1580) mm×780mm×1700 (1550) mm

Weight (Maximum state (Minimum state)) :

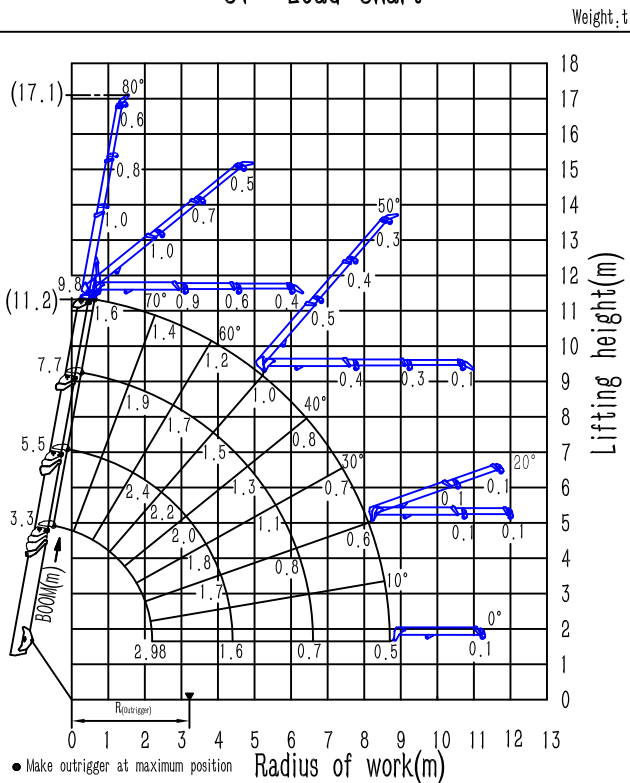
1685kg (1120kg-Excluding ballast and optional)

S7 (S11 S35)

'sky' series safe spider crane,
Bring you endless operational fun!



S7—Load Chart



Capacity: 2.98t × 2.2m

Ground lifting height:

11.2m × 1.6t / 17.1m × 0.6t (with fly jib)

Outrigger Maximum extension dimension:

4700 (Length) × 4700 (Width) (mm)

Walking speed: 0-2.0km/h

Motor voltage:

AC 200V-240V (single phase)

Diesel engine:

Model: D902 (Kubota)

Rated output: 11.8kW/ 2300 min⁻¹

Applied regulation / Altitude:

EC stage V, EPA-Tier4 / 1200

Type of operation (crane, walk, outrigger) :

Wireless remote and manual

Dimension (Length × Width × Height) :

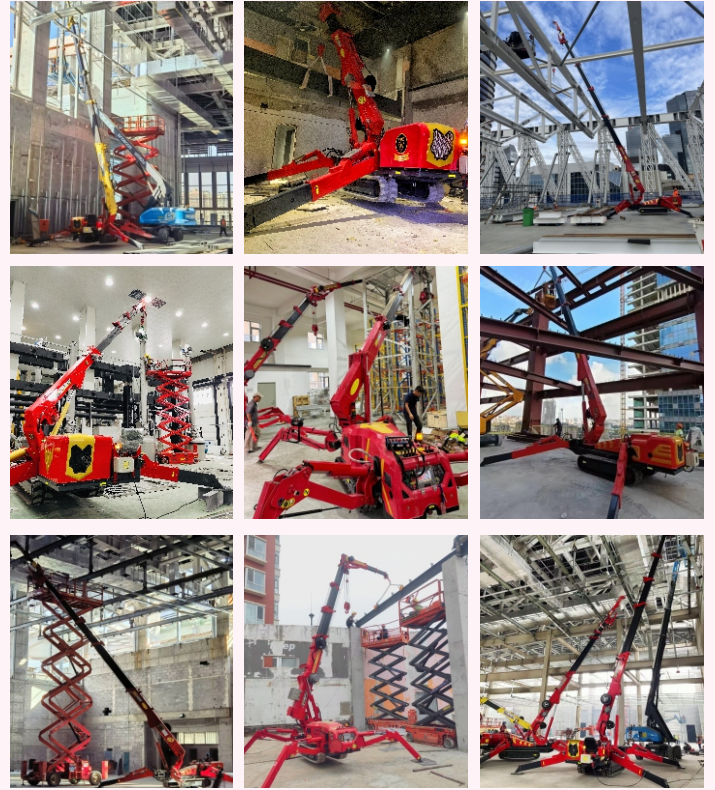
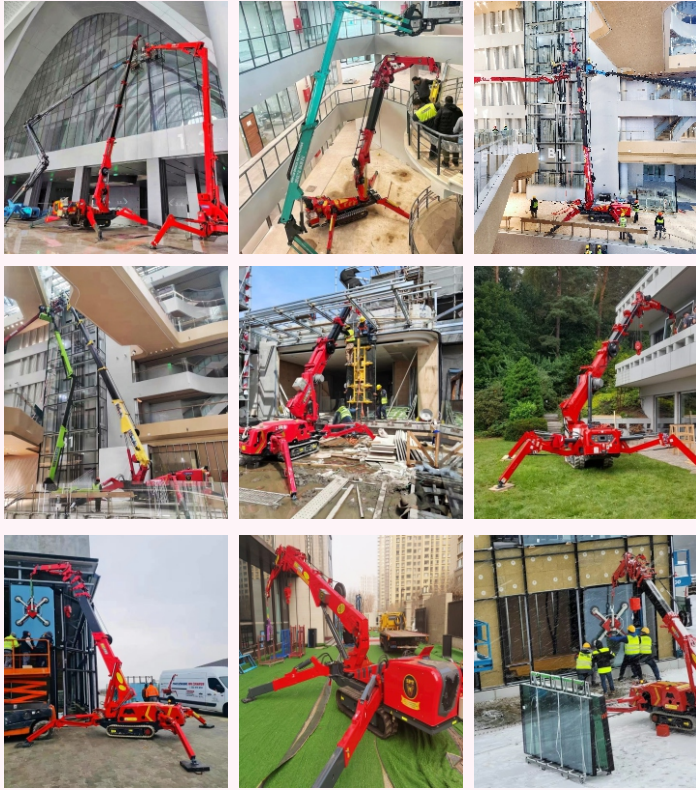
3900mm × 770mm × 1950mm

Weight (Crane + Hydraulic fly jib) :

2900kg

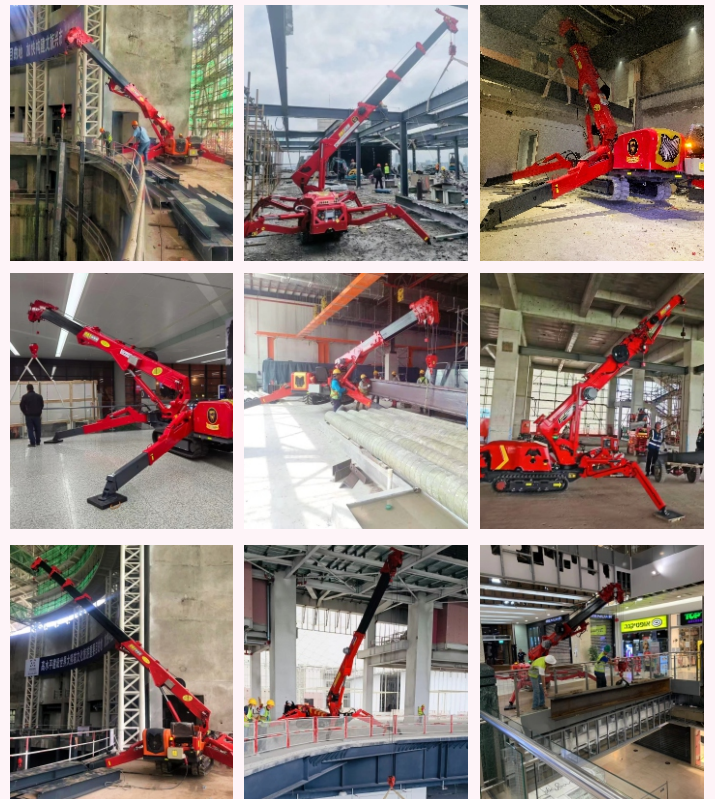
Glass Installation

Steel Structure Installation



Substation Construction

Building Roof&floor Construction



Global Dealers



Germany



Poland



Belgium



Australia



Russia



Kazakhstan



Canada



Taiwan (China)



Singapore



Korea



Iran



United Arab Emirates

ADD.: NO.7, QINGLIANGSI AVENUE, LIANGYUAN DISTRICT
SHANGQIU, HENAN, CHINA.
Email: info@sptcrane.com